

Touchscreen Monitor



Description:

The Costar LCDCP4 is a rugged touchscreen monitor to control Costar Mobile Recorders. It can be mounted in the vehicle to monitor video or change recorder settings. The 7" screen provides 800x480 resolution and gives you easy access to the Mobile DVR operating menu. With a built-in RFID module, you can use it for operator log-in/log-out. It comes in an IP53-rated silicone enclosure to withstand the mobile environment.

Features:

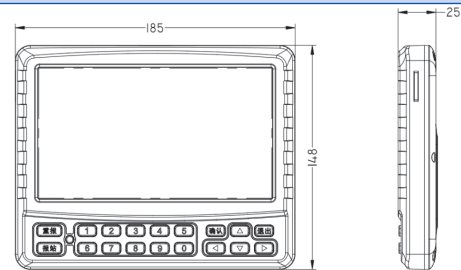
- 7 inch touch screen display
- Operates Costar MDVR on-screen commands
- Built-in speakers
- Built-in RFID module to sign in/out
- Resolution 800*480
- Station announcement (Manually and automatically)
- 3 mounting options

CMR-LCDCP4 Specifications

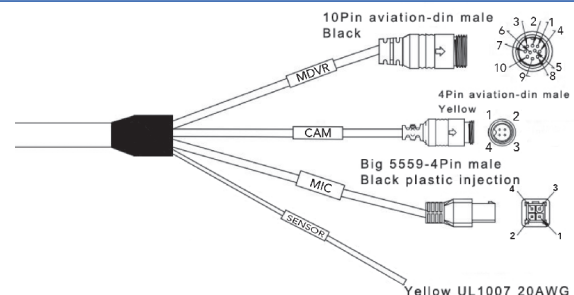
Model	Size	Resolution
CMR-LCDCP4	7 Inches (diagonal)	800*480

Power
Operating Voltage: 12V
Operating Current: 200mA
Total Power Consumption: 2.4W
Specification
Screen Size: 7 Inches (diagonal)
Resolution: 800*480
Aspect ratio: 16:9
Button and Screen Distribution: Combined
Panel Material: 70%PC+30%ABS Engineering plastics
Button Material: Silicone
RFID Wipe Card Module: 13.56 MHZ for driver to sign in and sign off.
Speaker: Speaker(16Ω, 2W)x2
MDVR Interface: Connects to Streamax MDVR
CAM Interface: Yellow 4PIN aviation-din connector, connects to reversing camera
MIC Interface: Connects to the driver megaphone
SENSOR Interface: Yellow hanging line, reversing signal detection port, high level effective. To monitor control for reversing.
Function Buttons: Restate / station announcer / Arrow Keys / Confirmation / Exit
Number Buttons: 0-9
Tile Installation: Refer to mounting bracket.
Bracket Installation: There are three brackets with hood.
LCD Specification
Screen Type: LCD screen
Touch Type: 4 wire resistor type
Size: 7 inch
Resolution: 800*480
Luminance: 400cd/m2
Contrast Ratio: 20.83402778, Under a suitable brightness condition, the higher contrast, the richer color levels
Response Time: 10/15(Tr/Td) ms, The response time of the LCD to the input signal
Visual Angle: 70/70/50/70 (Typ.)(CR dot 10) (Left/Right/Up/Down)
Maximum Number of Display Color: 262K/16.7M (6bit/6bit+Dithering)
Scale: 16:9
Back-light Type: White LED
General Information
Operating Temperature: -20°C ~+70°C
Relative Humidity: 8%~90%
Waterproof and Dustproof: IP53
Dimensions: 185mm×128mm×34.9mm

Dimensions



Pin Definition (unit: mm)



Connector Name

MDVR:	Black 10PIN aviation-din male connector connects to Costar MDVR.	
CAM:	Yellow 4PIN aviation-din connector connects to reversing camera.	
MIC:	Connects to driver microphone.	
SENSOR:	Yellow hanging line, reversing signal detection port, high level effective. For reversing control.	

Bracket Installation

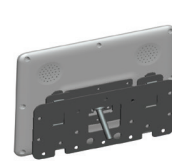
(LCDCP4 supports bracket installation, and there are three brackets to be chosen)



Suitable for relatively flat console



Suitable for curved console



Suitable for hanging

COSTAR
MOBILE VIDEO